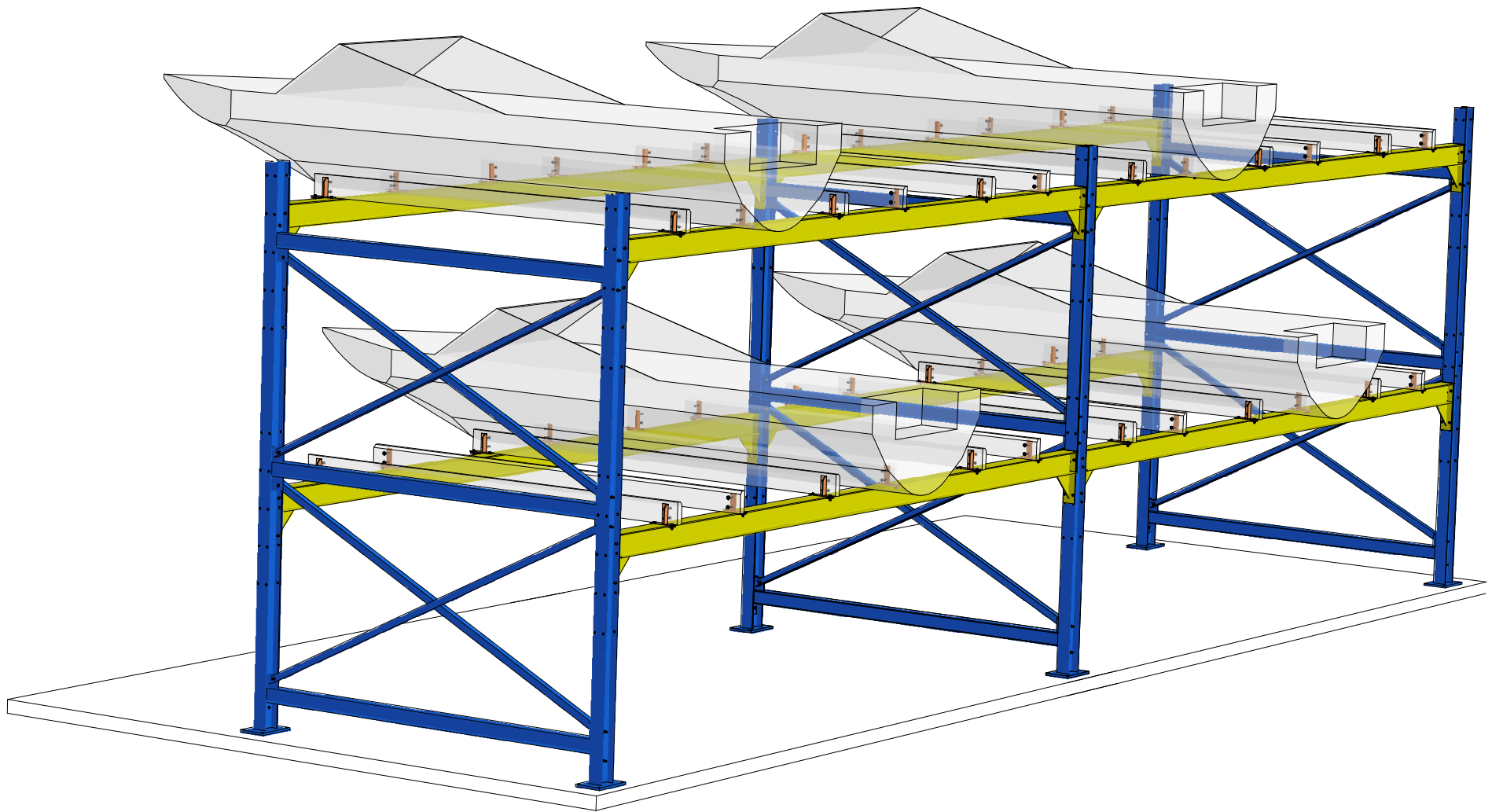


**DOUBLE BAY**  
2 Support Level

www.dryrax.com  
 Phone: 1-800-663-1624  
 Phone: 1-705-538-1459  
 info@dryrax.com



- Available in Galvanized or Painted finish
- Each bay comes with complete installation instructions to ensure that any local contractor, marina personnel can install 1 day per bay.
- Bays can be added to suit customer requirements.

**DryRAX™**

**NOTE:** All drawings remain the property of WMW Vacuum Pumpout Systems and may not be reproduced and or distributed for any purpose without express written consent of WMW Vacuum Pumpout Systems. Unless otherwise noted drawings are not to scale. Do not scale drawings. All efforts have been made to ensure accuracy. Any concerns with this drawing should be brought to the attention of the engineering department of WMW Vacuum Pumpout Systems.

DRAWN Will K	4/05/16	<b>Marine Boat Rack Storage Systems</b>	
CHECKED			
QA		TITLE	
MFG		Standard Bay [ 2 Support Level ]	
APPROVED		SIZE C	DWG NO 30 BAY x 20H
		SCALE	REV 1
		SHEET 1 OF 2	

**SINGLE BAY**  
2 Support Level

Pre-drilled holes allow the beam to be adjusted up / down in 16" Increments [48" Max] This provides the flexibility to add another beam for storing smaller boats or adjusting the beam to allow for larger boats

- Included;
- Nuts / Bolts / Washers
  - Brackets for Wood Beams
- Extra;
- Wood Beams
  - Ground Cradles
  - Footing / Foundation
  - Anchor Bolts / Hardware

www.dryrax.com  
Phone: 1-800-663-1624  
Phone: 1-705-538-1459  
info@dryrax.com

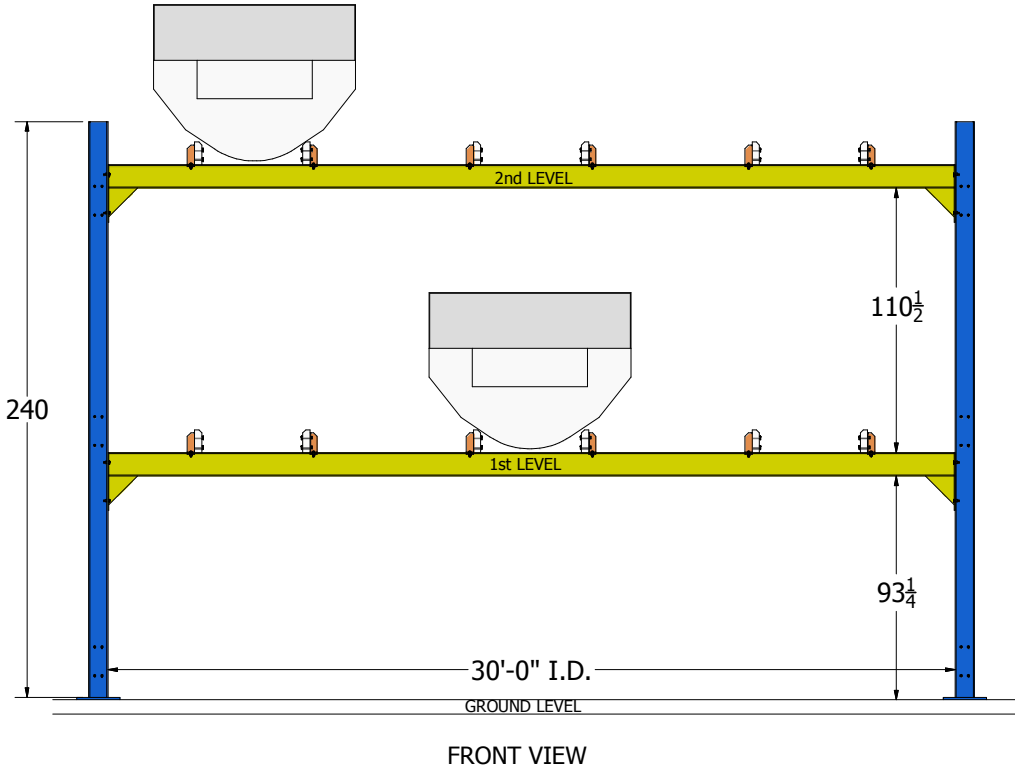
A

B

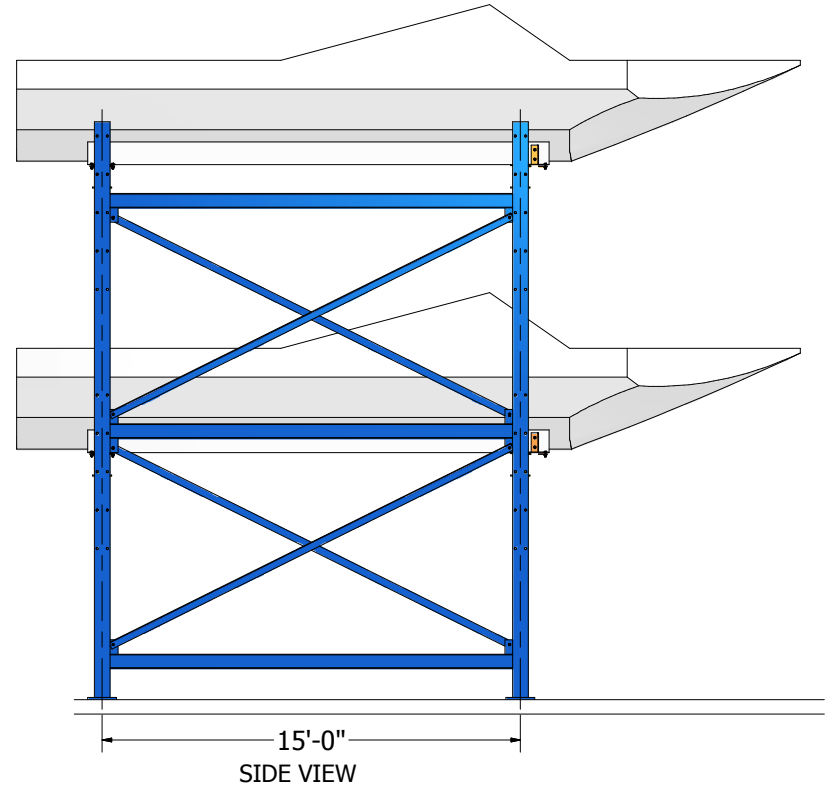
C

C

D



FRONT VIEW



SIDE VIEW

- 1st Level Weight Rating:
- Left Slot: up to 9,600 lbs
  - Center Slot: up to 9,600 lbs
  - Right Slot: up to 9,600 lbs
- 2nd Level Weight Rating:
- Left Slot: up to 6,000 lbs
  - Center Slot: up to 5,000 lbs
  - Right Slot: up to 6,000 lbs

**NOTE:** All drawings remain the property of WMW Vacuum Pumpout Systems and may not be reproduced and or distributed for any purpose without express written consent of WMW Vacuum Pumpout Systems. Unless otherwise noted drawings are not to scale. Do not scale drawings. All efforts have been made to ensure accuracy. Any concerns with this drawing should be brought to the attention of the engineering department of WMW Vacuum Pumpout Systems.

DRAWN	Will K	4/05/16
CHECKED		
QA		
MFG		
APPROVED		

**DryRAX™**

**Marine Boat Rack Storage Systems**

TITLE  
Standard Bay [ 2 Support Level ]

SIZE	DWG NO	REV
C	30 BAY x 20H	1
SCALE	SHEET 2 OF 2	

1

2

3

4

1

2

3

4